

PROTECTING AND RESTORING MICHIGAN'S LAKES AND STREAMS

62ND ANNUAL MLSA CONFERENCE

20
23



FRIDAY, MAY 5 & SATURDAY, MAY 6

Crystal Mountain Resort, Thompsonville, MI

Easy to use, self-serve, waterless cleaning systems that reduce the spread of aquatic invasive species.



Systems for any location and situation.
See more at cd3systems.com

 **CD³ SYSTEMS
FACILITATE A
70% DECREASE
IN AIS VIOLATIONS**



**EMPOWER
THE
PUBLIC**



**HELP STOP
THE SPREAD
OF AIS**

96%+
**WATER REMOVAL
FROM LIVEWELLS**



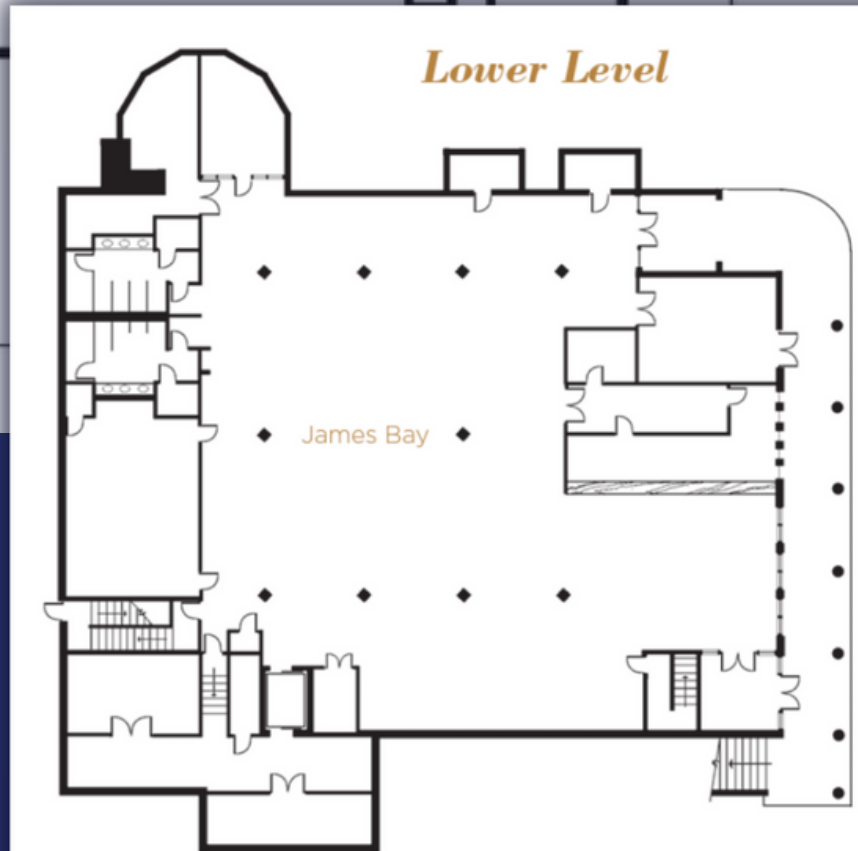
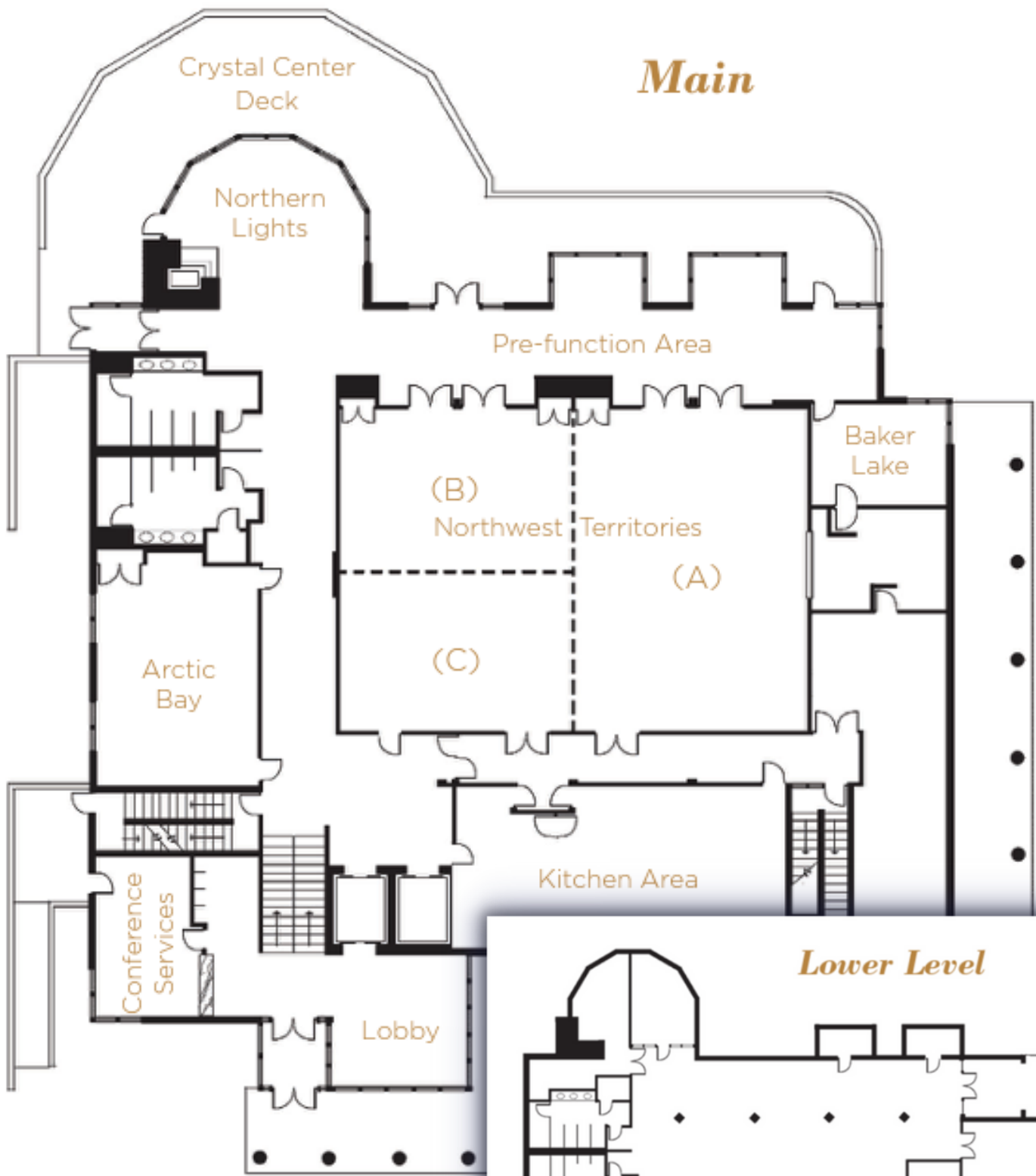
**OVER
500,000** TOOL USES
TO DATE
AND COUNTING



**Clean,
Drain,
Dry,
Dispose.**

EVERYBODY LIKES A CLEAN BOAT™
©2020 CD3, General Benefit Corporation

stopAIS@cd3systems.com | 612-568-8310
cd3systems.com



**Crystal Center
Map**

KEYNOTE SPEAKER



Senator Sean McCann

Michigan District 19, Chair of Senate Committee for Energy and Environment, Vice Chair of Senate Appropriations Committee

McCann was drawn to public service as a student at Western Michigan University and spent his first years out of college working to build his community from the ground up as executive director of the Vine Neighborhood Association. While working for the VNA, he was elected to the Kalamazoo City Commission, where he served five two-year terms.

In 2010, McCann was elected to the Michigan House of Representatives where he spent two terms. He now is in his second term as a State Senator representing the 19th District which is most of Kalamazoo County (less two townships) and includes one township in Van Buren County.

Preserving Our Lakes Today for Our Generations Tomorrow



Serving Michigan Since 1995

3088 Hottis Rd. Hale, MI 48739

All Of Your Lake & Pond Needs

Lake & Pond Management 🌿 Aquatic Weed & Algae Control 🌿 Aquatic Weed Harvesting
Biological Weed Control 🌿 Lake & Pond Dredging 🌿 Custom Aeration Systems
Water Quality Consulting 🌿 Decorative Fountains 🌿 Licensed, Insured & Bonded

For More Information Call Toll Free: 1-877-SAV-LAKE (728-5253)

www.LakeAndPond.com

FRIDAY

MORNING

REGISTRATION

Northern Lights

Opens at 8:00AM

- Check in
- Pick up name tag and program
- Get event help

BREAKFAST

Lower Level

James Bay

Starts at 8:00AM

Continental

OPENING REMARKS

Northwest Territories

10:00AM

Welcome & MLSA Update

David Maturen, MLSA President

KEYNOTE

Northwest Territories

10:30AM

Senator Sean McCann,

Michigan District 19,

Chair of Senate Committee for

Energy and Environment,

Vice Chair of Senate Appropriations

Committee

LUNCH

Lower Level

James Bay

Starts at Noon

Cold Cut Deli Bar

**CITIZEN'S GUIDE TO
STATE GOVERNMENT**

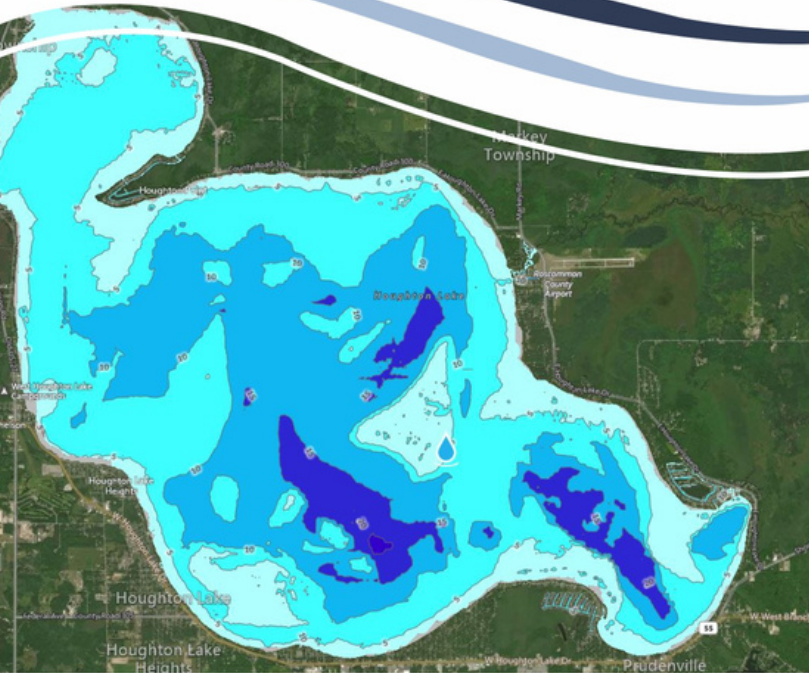
SCAN THE QR CODE:



Restorative Lake Sciences™



Evaluate. Revitalize. Restore.



RLS Limnological Services:

- Water quality monitoring & data analysis
- Aquatic vegetation surveys & biovolume scans
- Aquatic vegetation management plans
- Oversight of aquatic herbicide treatments
- Bathymetric contour mapping
- Algal monitoring, identification, & management
- Fishery studies & stocking recommendations
- Benthic macroinvertebrate surveys
- Muck evaluation studies & reduction programs
- Lake aeration efficacy evaluations
- Watershed mapping, critical source analysis, and nutrient reduction plans, mitigation
- Lake improvement feasibility studies & management plans
- Dredging feasibility studies
- Zooplankton sampling and microscopic imaging
- Mass balance/nutrient loading studies & reduction plans
- Erosion control and storm water management plans
- Community engagement with Lake Engage® Program
- Sustainable self-management with Lake Sustain® Program
- Expert witness testimony
- Oversight of lake management activities

www.restorativelakesciences.com • 616.843.5636



FRIDAY

AFTERNOON PART I

1:30PM BREAK-OUT SESSIONS

OPTION 1

Northwest
Territories A

Healthy Lakes and Proper Land Use: A Critical Recipe for Lake Protection

Dr. Jennifer Jermalowicz Jones, CLP, Restorative Lake Sciences and MLSA Science Advisor

The Strength of a Township Ordinance to Protect the Lake: the story of how some residents are defending it, and others are gutting it

LuAnne Kozma, President, Protect Lake Charlevoix Shoreland and fellow Lake Charlevoix Riparian, Ellis Boal

OPTION 2

Northwest
Territories B

Understanding the Intersection of Agriculture and Riparian Zones

Michael Wozniak, PE; Michigan Department of Agriculture and Rural Development, Environmental Stewardship Division, Right to Farm Program Manager, Spill Response Coordinator

Michigan Agriculture Environmental Assurance Program (MAEAP) and Groundwater Protection

Adam Brown, MAEAP Technician for Leelanau/Benzie Conservation District

OPTION 3

Northwest
Territories C

Two Rivers Coalition Partnering with Prothonotary Warblers

Dan Burton, Two Rivers Coalition Vice President

Importance of Wood and Large Wood Management in Rivers

Matthias Bonzo, Trout Unlimited

SPEAKER BIOS

AVAILABLE ON PAGES 21-29
(IN ALPHABETICAL ORDER)

30 MINUTE BREAKS

HELD BETWEEN ALL
SESSIONS



Water Resources

Progressive AE's water resource specialists have helped communities across Michigan develop workable solutions to complex lake and watershed management problems.

SERVICES:

- Aquatic plant management oversight
- Geographic information system analyses
- Hydro-acoustic mapping
- Lake and watershed management plans
- Limnological evaluations and diagnostic feasibility studies
- Online information and outreach
- Project organization and financing assistance
- Water quality monitoring

FRIDAY

AFTERNOON PART II

3:30PM BREAK-OUT SESSIONS

OPTION 1

Northwest
Territories A

Annis Water Resources Institute Student Reports

Effects of Microplastic Biofilms on an Anthropogenically Impacted Urban Lake

Paris Velasquez

Exploring Biodiversity and Biogeography of Microbial Mat Communities in Low-oxygen, High-sulfur Springs

Davis Fray

Fecal Impairment Framework, A New Screening Tool for Assessing Fecal Contamination in Recreational Waters

John Hart

Using Remote Sensing for Water Quality Monitoring across Michigan's Inland Lakes

Jillian Greene

Impact of climate change and restoration on phosphorus loading in impaired wetlands

Katherine Lucas

OPTION 2

Northwest
Territories B

Emergency Risks and Lessons Learned from the Kalamazoo Oil Spill

Ralph Dollhopf, EPA

Jay Eickholt, EGLE

OPTION 3

Northwest
Territories C

Tittabawassee River Bottomlands – Nuisance Woody Vegetation Management

Paul Hausler, Water Resources Practice Leader, Progressive AE

David Rothman, Vice President of FLTF

2023 AWARD RECIPIENTS

2023 RIPARIAN OF THE YEAR

Rusty Gowland

Rusty is the President and Founder of Black Lake Preservation Society. He was instrumental in developing the BLPS website. Emphasizing the guiding principle, "one cannot outsource responsibility for the ecology of the lake" and creating the Eyes on the Lake tool which helps report issues on the lake in real time.

To share common goals with nearby lakes he formed CRISP: Cheboygan Regional Invasive Species Partnership collaborative. This group is composed of 6 area Lake Associations, and other organizational partners. They are currently collaborating on invasive species signage, social media education, drone usage, and expanding the use of the Eyes on the Lake tool which is a GIS reporting system to communicate relevant occurrences on and around Black Lake.

But Rusty's concern for our waters and environment have not been solely focused on Black Lake or Michigan. His career took him to Midland for a time where he observed the rampant overgrowth of invasive phragmites at his windsurfing launch in Saginaw Bay.

MEGAN E. COOK MEMORIAL SCHOLARSHIP RECIPIENT

Molly C. Engelman

Molly is a Fisheries and Wildlife major with a concentration in Water Sciences at Michigan State University. Since 2017 she has been working on a variety of aquatic projects including macroinvertebrate sampling, rain garden installation, analysis of waterfowl hunting areas, threatened shorebird monitoring, and aquatic macrophyte research, just to name a few. She served as president of the MSU Fisheries and Wildlife Club where she led many exciting educational initiatives including the creation of the "Life of a Salmon" board game. This fall will be her last semester as an undergraduate and Molly is looking forward to continuing her studies in aquatic ecosystems and restoration with a graduate program to be determined in 2024.

RAFFLE DONATIONS FROM

RESTORATIVE LAKE SCIENCES -- COMEDY OF CRYSTAL LAKE
PROGRESSIVE AE -- POINT BLUE
INHABITECT -- PLM LAKE AND LAND MANAGEMENT
FAHEY SCHULTZ BURZYCH RHODES PLC

FRIDAY

EVENING

HAPPY HOUR

*Lower Level
James Bay*

Starts at 5:30PM

Sponsored by

- Restorative Lake Sciences
- Hyfi

AWARDS PRESENTATION

6:00PM

2023 RIPARIAN OF THE YEAR

Rusty Gowland

Black Lake Preservation Society

MEGAN E. COOK MEMORIAL SCHOLARSHIP RECIPIENT

Molly C. Engelman

Michigan State University

DINNER

*Lower Level
James Bay*

Starts at 6:30PM

Pizza Party

RIPARIAN RIGHTS Q&A

Northwest Territories

8:00PM

Cliff Bloom, Attorney

RAFFLE DONATIONS FROM

MSU CENTER FOR LAKES AND STREAMS
BELLS BREWERY -- REBEL & STICKY FINGERS
MICHIGAN LOON PRESERVATION ASSOCIATION

KEYNOTE SPEAKER



Ted Rulseh

President of Oneida County (WI) Lakes and Rivers Association, known as “The Lake Guy” (<https://thelakeguy.net>), Education Coordinator for Friends of Birch Lake

Ted lives on Birch Lake in Oneida County, WI with his wife, Noelle, in the heart of Wisconsin’s lake country. He is a freelance writer, book author, and advocate for protecting and preserving our inland lakes. Growing up in the Lake Michigan community of Two Rivers, Wisconsin, he acquired a fascination with water resources. Family vacations in the Northwoods instilled a love for the abundance and diversity of lakes in his home state and elsewhere. For the past decade Ted has devoted his time to helping others better understand and appreciate the lakes they love, and to promoting proper care and respect for these irreplaceable treasures.

Ted is also the author of three books about lakes and lake science, writes a weekly column, “The Lake Where You Live,” for two northern Wisconsin newspapers, and several years ago was an artist (writer) in residence at the Trout Lake Research Station, Boulder Junction, WI.

Harrietta Hills can help with a full line of Quality Products, Experienced Service, Equipment Installation and Expert Advice when you need it.

Live Fish for Lake and Pond Stocking

Aeration Systems

Algae & Weed Control

Bacterial Augmentation

Fountains

Ice Control


Harrietta Hills
POND AND WATER
MANAGEMENT

Everything you need on our website:
www.harriettahills.com

Or Call:
1-877-389-2514

Restoring Nature with Nature

COIR MATTING | COIR LOGS

ecofabriks
solutions for the environment

ecofabriks.com

info@ecofabriks.com

Toll Free: 877- (COIR MAT)

264-7628

SATURDAY

MORNING PART I

REGISTRATION

Northern Lights

Opens at 7:00AM

- Check in
- Pick up name tag and program
- Get event help

BREAKFAST

*Lower Level
James Bay*

Starts at 7:30AM

Scrambled Egg Bar

BREAKFAST WITH CLIFF

*Lower Level
James Bay*

7:30AM

*Riparian Rights Update
Cliff Bloom, Attorney*

KEYNOTE

Northwest Territories

9:00AM

*Lake stewardship:
Doing "What it takes."
Ted Rulseh, author of *Ripple
Effects: How We're Loving Our
Lakes to Death**

RIPPLE EFFECTS: HOW WE'RE LOVING OUR LAKES TO DEATH

PURCHASE TED RULSEH'S BOOK AT HIS TABLE IN THE
REGISTRATION AREA

Protecting Your Environment
Today For Tomorrow



- Lake Management Planning
- Aquatic Vegetation Surveys
- Water Quality Monitoring
- Phosphorus Mitigation
- Bathymetric Mapping
- Herbicide/Algaecide Applications
- Natural Shoreline Restoration
- Terrestrial Plant Management
- Mechanical Weed Harvesting
- Fish Evaluations
- Fountains, Dock Mounts & Aeration Systems
- Establish Special Assessment Districts

Serving All of Michigan

• Ewart • Grand Rapids • Lansing • Sturgis

www.plmcorp.net | (800) 382-4434



Designing, Building, and Growing landscapes that manage stormwater and improve shoreline habitats



Email or Scan for
your **FREE** shoreline
consultation
info@inhabitect.com



LEADERS IN WATER RESOURCES
SINCE 1944



Little Tobacco River Intercounty Drain:
2023 MACDC Innovation and Excellence Award Winning Project

CONTACT US FOR MORE INFORMATION

Larry Protasiewicz, P.E.
989.928.8013

Ron Hansen, P.E., P.S.
989.928.8021

Steve Roznowski, P.E.
989.415.3317

Nick Czerwinski, P.E.
989.529.0256

Paul Forton, P.E.
989.529.8612

Tim Inman, P.E., P.S.
989.239.4907

spicergroup.com

OTT
HydroMet

Sensors and Services:

- Water Quality
- Level Monitoring
- Algal Blooms
- Buoys
- Weather
- ...and more!

SATURDAY

MORNING PART II

10:30AM BREAK-OUT SESSIONS

OPTION 1

*Northwest
Territories A*

*Lake Improvement Boards –More Than Just
Killing the Weeds
How Lake Boards Can Use a Watershed Management
Plan to Guide Improvement Projects
Mark Kieser, Senior Scientist for Kieser & Associates, LLC
Rex Vaughn, Cedar Lake Improvement Board Chair,
Association Board, & MLSA Board Member*

OPTION 2

*Northwest
Territories B*

*Why Zoning Matters: Exploring Innovative
Waterfront Zoning in Evangeline Township
Mary Riley, Michigan State University Extension
Rod Cortwright, Chairman of Evangeline Township
Planning Commission*

OPTION 3

*Northwest
Territories C*

*MI Shoreland Stewards Ambassadors: Get
Started on Outreach for Healthy Shores*
Julia Kirkwood, MI EGLE*

*Limited to 25 participants, please sign up to attend at the registration desk.

LUNCH

*Lower Level
James Bay*

Starts at Noon

Boxed Sandwich Options

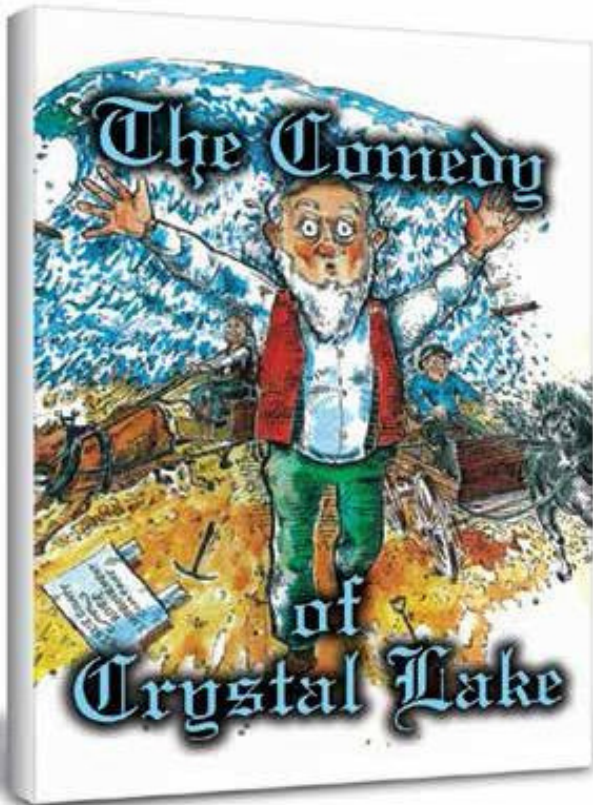
THANK YOU TO OUR GENEROUS SPONSORS

DON'T FORGET TO CHECK OUT ALL THE GREAT
COMPANIES AND ORGANIZATIONS IN THIS PROGRAM
AND EXHIBITING DURING THE EVENT!

Fahey Schultz
Burzych Rhodes

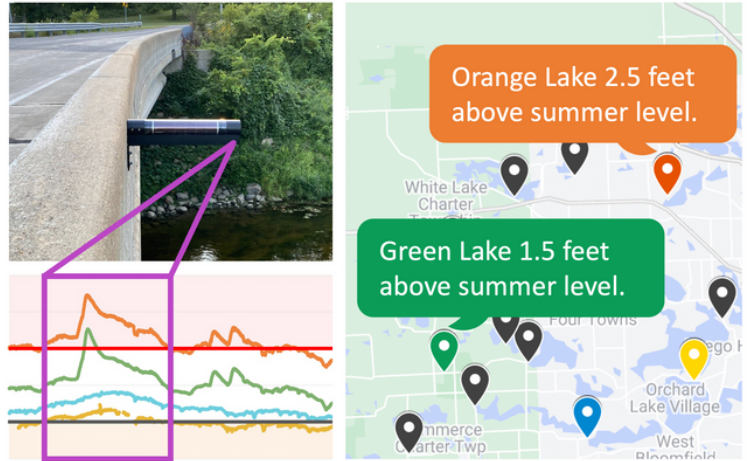


 YOUR PARTNER IN SUCCESS.
T 517.381.0100 + F 517.381.5051 + FSBRLAW.COM



Sesquicentennial Celebration of the
Lowering of Crystal Lake (1873-2023)

✓ Verizon Climate Resilience Prize Winner



Real-time stream & lake level monitors
Text alerts if action levels are reached
Plan routes by deviation from legal levels



Made in Michigan | hyfi.io | brandon@hyfi.io



We've been finding solutions to
lake and watershed challenges
for over 30 years. Call us today!

KIESER & ASSOCIATES
ENVIRONMENTAL SCIENCE & ENGINEERING
269.344.7117 | kieser-associates.com

SATURDAY

AFTERNOON

1:30PM BREAK-OUT SESSIONS

OPTION 1

Northwest
Territories A

*Everything You Wanted To Know But Were
Afraid To Ask About The Basics of Lake
Associations*

Mark Teicher, Attorney, PBWOA President, MLSA VP
Craig DeSimone, Gravel Lake Association President

OPTION 2

Northwest
Territories B

*Michigan Water, what is known and needed
after years of nothing! Ottawa and Cass
Counties, examples*

John A. Yellich, Michigan Geological Survey Director,
Certified Professional Geologist (CPG)

*State and local health departments rules and
regulations, associated with contaminating
lakes and streams*

Sara Pearson, Source Water Unit Supervisor Drinking
Water and Environmental Health Division of Michigan
EGLE, Certified Professional Geologist (CPG)

OPTION 3

Northwest
Territories C

Native Plants? What should I choose?

Julia Kirkwood, MI EGLE

FIELD TRIP

Crystal Lake
Boat Launch

Self-guided Open House from 1:00PM to 5:00PM
Crystal Lake and Watershed Association Board Members

See page 19 for details.

LET US KNOW WHAT YOU THINK

DON'T FORGET TO FILL OUT AN
EVALUATION FORM, AVAILABLE
IN PRINT AND ONLINE (SCAN QR CODE):



EDEN LAKES

INNOVATIVE WATER SOLUTIONS

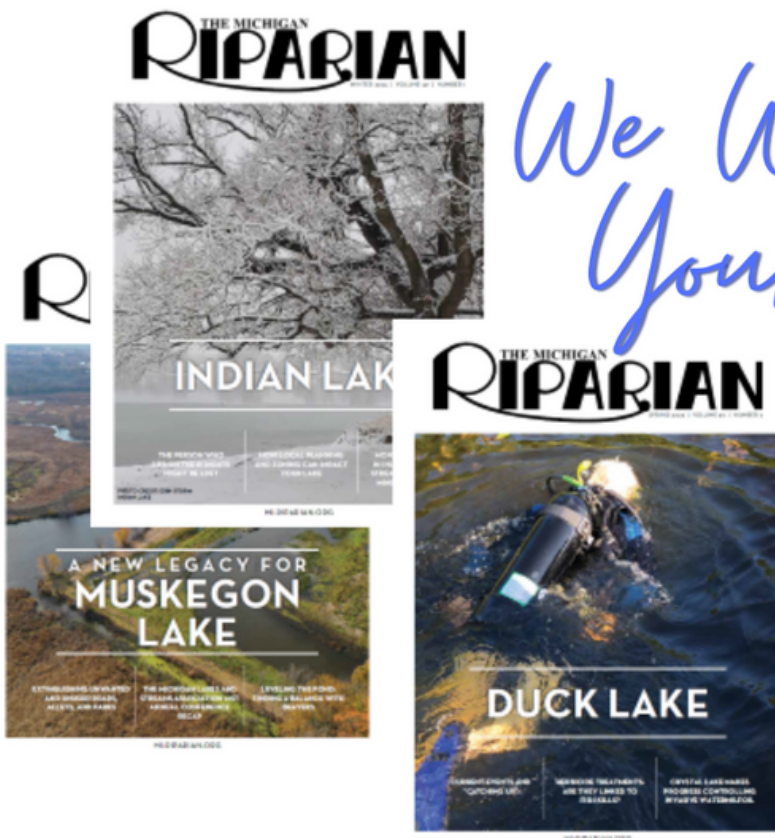
Advanced Products for Healthier Waterways

Revolutionary Lake Care Products!

- SludgeHammer: Wastewater Recycling
- PondBot: Algae & Muck Control
- PrO2: Bubble-Free Oxygenation
- BioChar: Nutrient & Microplastic Removal

Call (888) 840-2210 for a free consultation today.

WWW.EDENLAKES.CO



*We Want to tell
Your Story!*

Submit an article for
The Michigan Riparian
magazine. Let's celebrate
Michigan's lakes and streams
together.

Reach out today!

SATURDAY

FIELD TRIP

CRYSTAL LAKE BOAT WASH OPEN HOUSE

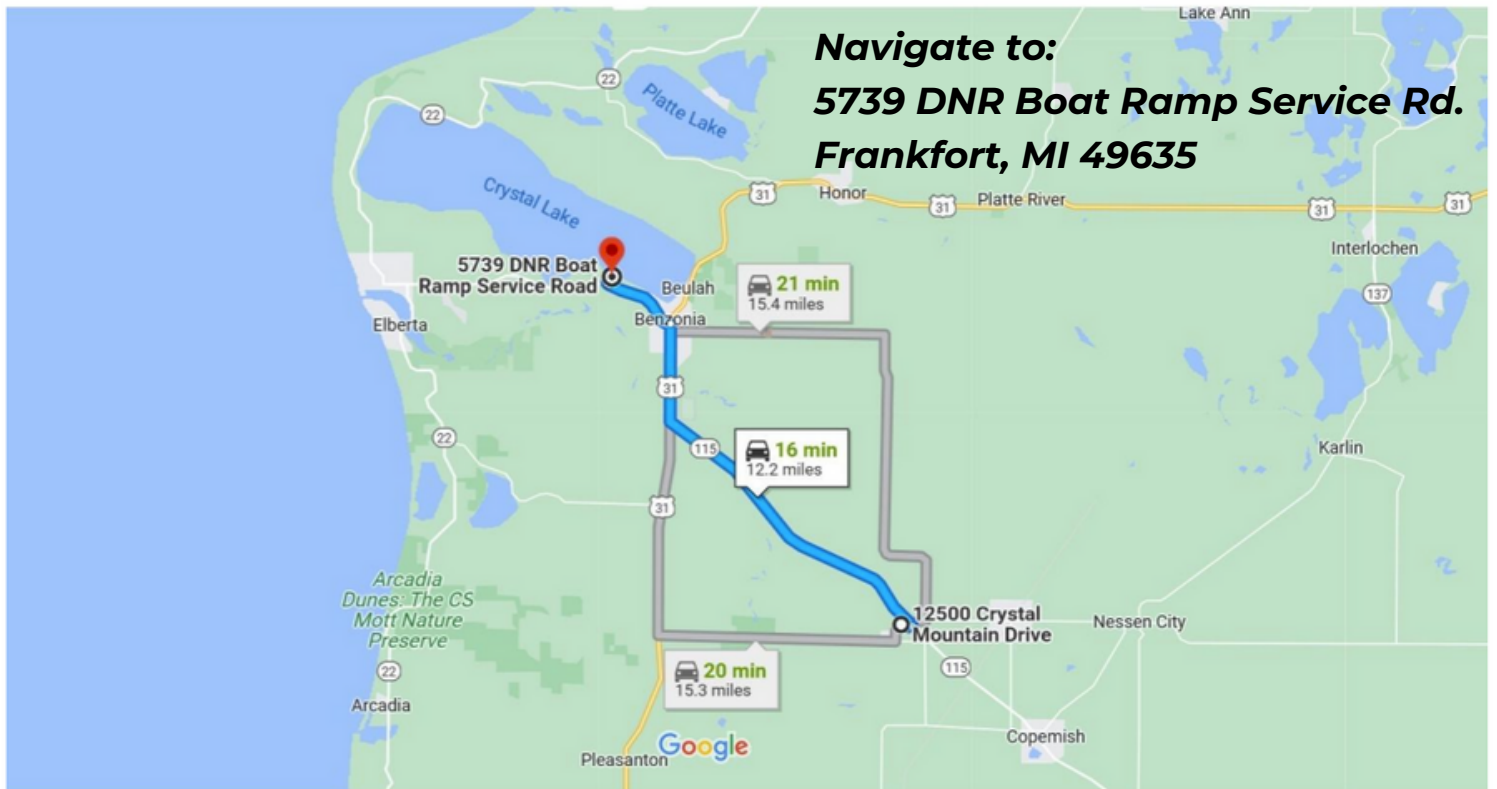


On Saturday, May 6 between 1:00PM and 5:00PM, the Crystal Lake & Watershed Association welcomes MLSA conference attendees to its permanent boat wash at the DNR Crystal Lake Boating Access Site. In operation for 10 years, this boat wash was a pioneer in developing a partnership with the Michigan DNR, and now represents a state of the art staffed facility.

CLWA leaders will be on hand to describe its history, design, permitting, costs, operations, signage, outreach/education – and what they have learned in ten years.

For the field trip resource packet scan the QR code.

Directions: the CLWA boat wash is located on M-115, 16 miles West of Crystal Mountain Resort; drive time is less than 20 minutes.



Map data ©2023 Google 2 r



WELCOME NONPROFIT EXHIBITORS

- Benzie Conservation District
- MI Dept. of Environment, Great Lakes, and Energy
- MI Natural Shoreline Partnership
- Shoreland Stewards Program
- Michigan Dept. of Natural Resources
- Forest to MI Faucet Program
- Michigan State University Extension: Center for Lakes and Streams
- Michigan Loon Preservation Association
- NALMS Sec. 314 Clean Lakes Program
- Midwest Aquatic Plant Management Society

ENSURING THE FUTURE OF OUR LAKES AND STREAMS IS BRIGHT



SCAN ME



JOIN MLSA TODAY!

In addition to supporting our programs and services, all memberships include a full subscription to our quarterly publication, *The Michigan Riparian* magazine.

mymlsa.org



SESSION SPEAKERS

Clifford H. Bloom

Attorney

Practicing primarily in the areas of riparian law, real estate, and municipal/public sector law, Cliff has over 40 years of legal experience. Originally from Grand Rapids, he received his undergraduate and law degrees from the University of Michigan and was admitted to the Michigan bar in 1983. He has practiced law in Grand Rapids ever since.

Cliff is the general legal counsel for the Michigan Lakes & Streams Association, Inc. Among his various printed works, Cliff also authors a regular column for *The Michigan Riparian* magazine.

Having lectured on a variety of real estate and municipal topics, Cliff has served as general legal counsel for over 25 Michigan townships, and as general counsel for a number of cities. He also has extensive experience in zoning and planning matters and has lectured on those issues for various organizations.

Matthias Bonzo

Project Coordinator for Trout Unlimited

Matthias Bonzo is a Project Coordinator at Trout Unlimited based out of Pierson, MI. He focuses on overseeing data collection in the field and project implementation. Matthias is a passionate angler and conservationist who seeks to improve Michigan's endless streams.

Dan Burton

Two Rivers Coalition Vice President

A curious amateur naturalist working professionally as a food scientist while also participating in community science projects as long as I have been working as a food scientist (about 30 years). My community science projects have touched on birds, aquatic bugs, butterflies, botany, frogs, turtles, bumble bees and freshwater ecology. I am a certified Conservation Steward and Master Naturalist stewarding two prairie fens and an active volunteer board member for Two Rivers Coalition.

SESSION SPEAKERS

Adam Brown

MAEAP Technician for Leelanau/Benzie Conservation District

Adam has a background in Environmental Biology from Western Michigan University. He has over 10 years of experience growing diversified organic vegetables commercially, and has a deep passion for the impact soil health can have on enhancing the quality of our food and agricultural ecosystems. He is currently the MAEAP Technician covering Leelanau and Benzie counties.

Rod Cortright

Chairman of Evangeline Township Planning Commission

Rod Cortright has been a member of the Evangeline Township Planning Commission for 35 years. In that time, he has been instrumental in developing innovative zoning provisions to protect water quality on both Walloon Lake and Lake Charlevoix shoreline properties. Cortright has degrees in crop and soil science. During his career, he was a soil conservationist with the USDA Natural Resources Conservation Service. In the last 25 years of his career, he was with Michigan State University Extension, where he did outreach programming in agriculture, natural resources management, and public policy education.

Craig DeSimone

Gravel Lake Association President

Craig has over 20 years of leadership experience with the very active Gravel Lake Association. He also plays a significant role in the networking of SW MI lake associations via MLSA. His lake stewardship passions are natural shorelines and membership education. Craig was MLSA's 2020 Riparian of the Year.

SESSION SPEAKERS

Ralph Dollhopf

Environmental Protection Agency

Ralph Dollhopf has served as an On-Scene Coordinator for USEPA's Emergency Response Team since 1985. He has helped to lead EPA's responses to nationally significant events including EPA's cleanup of residential methyl parathion sites in Ohio, Illinois, Michigan, and Mississippi (1997-1999); World Trade Center (2001); Washington DC anthrax attacks (2001-2002); Columbia Space Shuttle Recovery (2003) and Hurricane Katrina (2005). Mr. Dollhopf represented EPA in the inter-agency drafting of the original National Response Plan and National Incident Management System and has since taught and led effective implementation of ICS by EPA. From July 2010 thru August 2013 he served as the EPA Federal On-Scene Coordinator (FOSC) during EPA's response to the July 2010 Enbridge Line 6B Discharge into the Kalamazoo River. Ralph holds Psychology and Environmental Engineering degrees.

Jay Eickholt

Emergency Management Coordinator and Section Manager for Emergency Management and Health and Safety in the Environmental Support Division of EGLE

Working for the Departments of Natural Resources and State Police prior to joining EGLE, he has been involved with emergency management and natural resource protection in the State of Michigan for over a decade. In his role he oversees the 24-hour emergency hotline for reporting pollution emergencies, monitors emergency situations to ensure adequate response from field staff, represent EGLE in the State Emergency Operations Center, and serve as Michigan's designated representative on the Region V, Regional Response Team. In addition to his day-to-day duties Jay sits on numerous US Coast Guard and EPA Area Committees, homeland security boards, and state commissions focusing on emergency response and environmental emergency response.

Davis Fray

Annis Water Resources Institute

Davis is a graduate student at Grand Valley State University. He is an MS candidate in the Biology Department. Davis is studying algae in extreme environments and molecular methods used to identify them. He graduated from Ferris State University in 2021 with a BS in environmental biology, and is interested in all aspects of freshwater ecology with an emphasis on the Great Lakes region.

SESSION SPEAKERS

Jillian Greene

Annis Water Resources Institute

Jillian is a previous intern at Robert B. Annis Water Resources Institute and will begin her MS degree in Biology with an emphasis on aquatic science at GVSU this Fall. Previous projects consist of AWRI internships exploring remote sensing harmful algal blooms, using machine learning models to predict water clarity, and a NASA DEVELOP project modeling sources of sediment in the Shoshone River in Wyoming.

John Hart

Watershed Scientist, Kieser & Associates

John is a recent graduate from Grand Valley State University receiving a MS degree in Biology with an emphasis on Aquatic Sciences. His research at the Robert B. Annis Aquatic Resources Institute targeted improvement of non-point source tracking of fecal pollution in a variety of aquatic systems. He has recently joined Kieser & Associates, LLC as a Watershed Scientist and will be focusing on a variety of lake and watershed management efforts.

Paul Hausler

Water Resources Practice Leader with Progressive AE

Paul has managed over 150 inland lakes throughout Michigan during his 33-year career at Progressive AE. Paul currently leads three teams of biologists that oversee over 80 lake communities. Paul is a past-president of the Midwest Aquatic Plant Management Society (MAPMS) and served for over 11 years on the board of directors. Paul currently serves as a member of the Michigan Inland Lakes Partnership as the MAPMS representative and has done so for the past five years. Paul has been married to his wife Tammy for over 30 years and has three children ranging from 17 - 26 years old.

SESSION SPEAKERS

Dr. Jennifer Jermalowicz Jones

CLP, Restorative Lake Sciences and MLSA Science Advisor

Dr. Jennifer L. Jermalowicz-Jones is the founder and principal limnologist of Restorative Lake Sciences (RLS) based in Spring Lake, Michigan. Dr. Jones began working in the lake field in 1990 and has authored over 500 technical reports and scientific articles. She has a BS degree from Michigan Technological University in Biology/Limnology, an MS degree from Grand Valley State University in Aquatic Sciences, and a PhD in Water Resource Studies from Michigan State University. She has served as a Science Advisor for the Michigan Lake and Stream Associations Board of Directors since 2008 and has served as president in the past for the Michigan Chapter of NALMS. Dr. Jones also holds Certified Lake Professional and Certified Professional Watershed Manager certificates. She is currently preparing scientific papers for peer-review and also working on a documentary for builders and developers to practice lake-friendly site construction for optimum lake health.

Mark S. Kieser

Senior Scientist/Principal for Kieser & Associates, LLC

Mr. Kieser has 38 years of environmental consulting experience in addition to three years of academic research on water resource issues in the Great Lakes. Mark has been active in lake and watershed management since 1984 evaluating, designing and implementing an array of watershed runoff control measures and programs for agriculture and urban stormwater to protect water quality. Mark and his team have developed EPA-approved Watershed Management Plans for small (3,000-acre) to large (4,000-square miles) bi-state watersheds in Michigan and the Midwest. Mark's domestic water quality work has ranged geographically from San Francisco Bay to the Chesapeake, and internationally across the globe. He has a Bachelor's degree in Biological Sciences from Wittenberg University and a similar Master's Degree from Michigan Technological University.

SESSION SPEAKERS

Julia Kirkwood

Michigan Department of Environment, Great Lakes, and Energy

Julia has worked as a natural resource professional for 30 years. For the past 20 years she has worked in the Nonpoint Source Pollution Program collaborating with community stakeholders to protect and restore rivers and lakes from land use impacts through the watershed planning process. She serves on multiple statewide inland lake partnerships and is the chair of the Michigan Natural Shoreline Partnership.

LuAnne Kozma

President of Protect Lake Charlevoix Shoreland
and fellow Lake Charlevoix Riparian, **Ellis Boal**

LuAnne Kozma is a riparian on Lake Charlevoix with husband Ellis Boal, whose family since 1912 maintains a natural shoreline and deep vegetated buffer. With three other residents, they formed the nonprofit organization Protect Lake Charlevoix Shoreland when they saw that the lake association and Hayes Township were not protecting the lake from a large development that threatened it.

Katherine Lucas

Annis Water Resources Institute

Katherine is originally from St. Louis, Missouri, and attended Iowa State University for undergrad. There she received a degree in Biology and Environmental Studies. After graduation, she followed her passion of water quality to GVSU and is now working on a master's degree under Dr. Alan Steinman at the Annis Water Resources Institute studying internal phosphorus loading in the Mona Lake Celery Flats. Katherine was also recently awarded a grant from the McNALMS/MLSA Student Grant Program for her work.

SESSION SPEAKERS

Sara Pearson

Source Water Unit Supervisor Drinking Water and Environmental Health Division of Michigan EGLE, Certified Professional Geologist (CPG)

Sara Pearson has worked in the environmental field in Michigan for more than 30 years. She is currently the Source Water Unit Supervisor in the Michigan Department of Environment, Great Lakes and Energy's (EGLE) Drinking Water and Environmental Health Division. She has worked as both a consultant managing contaminated sites for major petroleum companies and industry and as a regulator for EGLE's remediation and redevelopment and source water programs. Sara's expertise spans the spectrum of activities related to remediation and redevelopment including extensive hydrogeological investigative, risk evaluation and corrective action experience. She has considerable experience in policy development, IT and data management, and routinely develops and organizes training for staff and environmental practitioners in the private sector.

Sara is a Certified Professional Geologist (CPG) and has been an active member of the American Institute of Professional Geologists (AIPG) since 1998. She is AIPG's National Ethics Committee Chairperson and is a founder and Co-Chair of the Environmental Risk Management AIPG Michigan Workshop. She is also the Training Program Coordinator for the Interstate Technology and Regulatory Council. Sara holds a Bachelor of Science degree from Aquinas College in Grand Rapids, Michigan. She earned a Master of Science degree in environmental earth science with a focus in hydrogeology from Western Michigan University in 1994.

Mary Riley

Michigan State University Extension

Mary Reilly, AICP, is an Educator with Michigan State University Extension. Mary is based in Manistee County and provides training in northwest lower Michigan and statewide. With over 25 years of planning and zoning experience, she knows firsthand the many difficult issues that Planning Commissioners, Zoning Board of Appeals members, and elected officials wrestle with. Her interests are zoning administration, Right to Farm Act, master plans, renewable energy (solar and wind), Open Meetings Act, water resources, and community development through entrepreneurship and tourism. Ms. Reilly and her talented colleagues at MSU Extension bring leading edge programming to fill knowledge gaps and ultimately help communities make smarter decisions. She lives in Ludington, MI with her husband and family.

SESSION SPEAKERS

David Rothman

Vice President of the Four Lakes Task Force

Rothman's role in the Task Force includes oversight of erosion remediation, debris removal and dam stabilization in the lakes affected by the May 19, 2020 flood event. Rothman joined the Dow Chemical Company in 1976 and retired as a senior scientist in 2009. In the last five years of Rothman's Dow career he led a major part of a multi-disciplinary research and development (R&D) project to revolutionize how Dow did Materials Science R&D. Dave was a member of the Midland City Planning Commission (nine years as the commission chair). He is a board member of Water District #1 of Midland County (a drinking water utility serving Sanford and five Midland County townships) and Wixom Lake Association. Dave received a BS in Chemistry from Principia College and a Ph.D. in Analytical Chemistry from Michigan State University.

Mark Teicher

Attorney, PBWOA President, MLSA Vice President

Mark Teicher is a practicing attorney with many years of riparian and property rights experience. On the state-wide level Mark is the V.P. of MLSA; on the regional level is a board member of the Huron River Watershed Council; on the township level he is a member of various boards and commissions and on the local level he is the president of his lake property owners association.

Rex Vaughn

MLSA Board Member, Cedar Lake Improvement Board Riparian Representative, Alcona-Iosco Cedar Lake Association Board Member

Rex, who is retired from a long career in manufacturing, engineering, and technical sales in the food and beverage conveyor industry, became a first time riparian in 2012. His engineering curiosity prompted him to get involved in the technical aspects of lake living, which quickly lead to an appointment as the riparian representative on the Cedar Lake Improvement Board in 2013 (Cedar Lake is in northeast Michigan just north of Oscoda). He joined the Board of Directors of MLSA in 2020. He earned a Bachelor of Science Degree in Industrial & Operations Engineering from the College of Engineering at the University of Michigan in 1974.

SESSION SPEAKERS

Paris Velasquez

Annis Water Resources Institute

Paris graduated from the University of Texas at El Paso in 2020 with a BS in environmental biology. In 2021, she pursued a master's degree in biology with a concentration in aquatic ecology at GVSU Robert B. Annis Water Research Institute. Paris is conducting research on biofilm development on microplastics and how these microbial communities interact in the water column.

Michael Wozniak

PE; Michigan Department of Agriculture and Rural Development, Environmental Stewardship Division, Right to Farm Program Manager, Spill Response Coordinator

Mike started with MDARD in 2017 as Right to Farm's West Michigan inspector. He became the program's manager in July of 2020, Spill response coordinator in 2021 and oversees MDARD's responsibilities with Aquifer Dispute Resolution. Mike is also actively involved in emergency management, servicing DNR Wildland Fire teams as Logistics Section Chief. He is a licensed environmental engineer with a degree from Michigan State University Biosystems Engineering. When Mike is not spinning his wheels, he's actively helping his wife raise three daughters.

John A. Yellich

Michigan Geological Survey Director, Certified Professional Geologist (CPG)

John A. Yellich was appointed the Director of the Michigan Geological Survey (MGS) effective October 2, 2013. John obtained his Bachelors and Masters degrees in geology from Western Michigan University and for over 30 years, has been a Certified Professional Geologist (American Institute Professional Geologists); member of the Society of Mining, Metallurgy & Exploration (SME) for 25 + years and Geological Society of America (GSA). Mr. Yellich brings more than 50 years of geologic experience in mineral exploration, mineral development, environmental consulting, business operations, stormwater, land development and OSHA safety compliance to MGS. He has worked in more than 30 States and has also conducted mineral assessments in Canada, Australia and China. John was also president of the Association of American State Geologists (AASG) from 2020-2021 and secretary of the Michigan Basin Geological Society 2017-2023.

CLMP TRAINING

FRIDAY SCHEDULE

REGISTRATION

Northern Lights

8:00AM to 5:00PM

- Check in at main table
- Equipment Disbursement

BREAKFAST

8:00AM

Available if you signed up, visit the MLSA registration table if you have questions.

All CLMP training sessions are located in Arctic Bay

WELCOME

9:00AM - 9:15AM

Tamara Lipsey, EGLE Water Resources Division
Dr. Jo Latimore, MSU Outreach Specialist

SECCHI DISK & SPRING/SUMMER PHOSPHORUS

9:15AM - 10:15AM

Erick Elgin, MSU Extension

CHLOROPHYLL-A

10:30AM - Noon

Dr. Paul Steen, Huron River Watershed Council

LUNCH

Noon

Meal Add-on info below.

SCORE THE SHORE

1:00PM - 2:00PM

Dr. Jo Latimore
Dr. Paul Steen

EXOTIC AQUATIC PLANT WATCH

2:00PM - 3:30PM

Dr. Jo Latimore
Erick Elgin

DISSOLVED OXYGEN & TEMPERATURE

3:45PM - 5:00PM

Tamara Lipsey

MEAL ADD-ONS

IF YOU PURCHASED MEALS WHEN YOU REGISTERED,
PLEASE JOIN US IN JAMES BAY, LOWER LEVEL.

WANT TO ADD MEALS NOW?

PLEASE VISIT THE REGISTRATION TABLE TO SIGN UP!

CLMP TRAINING

SATURDAY SCHEDULE

All CLMP training sessions are located in Arctic Bay

AQUATIC PLANT MAPPING

9:00AM - 9:45AM

Jo Latimore
Erick Elgin

AQUATIC PLANT IDENTIFICATION*

9:45AM - Noon

Jo Latimore
Erick Elgin

**Conference Attendees are welcome to join this session.*



**ENROLL
TODAY!**

**2023 COOPERATIVE LAKES
MONITORING PROGRAM**

**TRAINEES ARE INVITED TO
ATTEND CONFERENCE SESSIONS**

PLEASE FEEL FREE TO JOIN ANY SESSIONS
THAT DO NOT CONFLICT WITH YOUR
TRAINING SCHEDULE

An aerial photograph of a lake and surrounding land, with a dark blue overlay at the top. The lake is on the left side, and the land is on the right. The text is overlaid on the dark blue area.

MICHIGAN LAKES AND STREAMS ASSOCIATION

63rd Annual Conference

MUSKEGON, MI

April 26 - 27, 2024